



**Highlights of this issue:**

- From The Board: Changes to Stag Night
- Super Bowl Party @ the Greenside
- Rules Corner—Rule 16: Putting Green
- 2005 Event Schedule

Volume 2, Issue 2

February 2005

**From the Board of Directors:**

This was an interesting month in the operation of the club. My wife Vicki is still wondering what I have gotten myself into, but I am sure that with the help of the members we can accomplish the things that were discussed and voted on at several of the meetings that were held in the past month. I will try to explain the reasons for the action the board has taken

**Board of Directors:**

President—Dennis Schubert  
 Vice President—Chris Day  
 Secretary—Chris McElyea  
 Treasurer—Jim Krupa  
 Jim Besancenez  
 Mac Green  
 Carl Hubbell  
 Janice Ohmes  
 Tim Scott

**CARTS in ROUGH ONLY  
 until Spring 2005**

1. Membership-A study of outside rounds for the past ten years has determined that for the years 1995 to 1998, the outside rounds averaged 15,646. For the years of 1999 to 2004, the average outside rounds averaged 12,179. This is a difference of 3,467 rounds a years for 6 years. This is a potential revenue of \$138,680 *per year*. ( 3,467 times average outside round cost of \$40.00 ). These lost rounds represent a figure that would have a very low cost to the club and very high amount of revenue flowing to the bottom line of the club. The question is why has this happened and what can we do to reverse this trend? Some of the reason is, without a doubt, the increased number of courses in the area. We cannot do anything about the increased competition other than keeping Lake Valley the best golfing experience at the lake. We feel that has been accomplished, and the board will continue with this priority. This brings us to another reason for the decrease in outside play. To the best of everyone's memory, a policy was adopted in 1999 that blocked off tee-times for members only at certain times. This action has tied the staff's hands in booking tee times that could have been used for outside play. The board feels that blocking off tee times for members only is not a bad idea, but wants to make sure that the time reserved is fully used not just "held open" so a

**Happenings at Lake Valley**

LAKE VALLEY GOLF & COUNTRY CLUB  
 PO BOX 317  
 CAMDENTON, MO 65020

member can just walk up and play at the last minute. That is why we are asking for all the members to schedule their tee times in advance, do all you can to become “foursomes”, and to make sure to cancel any tee times, not being used two days in advance. It was also decided that one or two tee times per hour on the “Tuesday blocked times” will be held open for outside play for men players only, and the same on “Thursday blocked times” for women players only. As an aside to this, it has come to my attention that Kinderhook is closed on Tuesday. This presents a golden opportunity to have players that were planning on playing Kinderhook play Lake Valley. I would like for the members to give the board feedback on moving Men’s Day to Wednesdays.

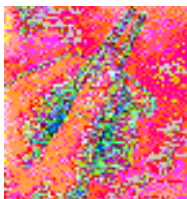
2. Stag Night-This past month the two individuals who ran the Stag Night have left. They have turned the Stag over to the board. Our condolences go out to the McDaniel family on the passing of Russ. He will be sorely missed. He and Bob Dickemann devoted many years to the operation and management of the Stag Night. First and foremost, we would like to thank them for their time and efforts in the operation of one of the longest running activities at Lake Valley. These two have operated the Stag for over 35 years. Even though Bob has left the club as a member we want to extend to him a lifetime membership in the Stag. He will always be welcome. However, there has been no “BOB DICKEMANN or RUSS MCDANIEL” step forward to do what they were doing or accept the responsibility of the Stag. I, therefore, formed a committee of Stag members to see what we could do to maintain this tradition at Lake Valley. After much discussion with the committee, some legal advice, and information about Stag that Mr. Dickemann gave to Dan, the following was decided. The Stag will be held on the fourth Tuesday of May, July, and September. The cost will still be \$35.00 and we are reasonably sure that we can find sponsors for the bar tab. The Club and it’s personal will do all the work involved in the dinner, bar, and clean-up. The members of the Stag will be divided into three groups and a chairman of each group will be responsible for providing members to sell the raffle tickets at the door. 100% of these proceeds will be used for prizes purchased from the Pro Shop to be given out at the dinner. The chairman will also be responsible for purchasing the prizes. Any guest who attends the dinner will be charged \$15.00 if they are not a member of Lake Valley and \$20.00 if a member. Your next billing will ask if you want to belong to Stag and will reflect the cost in the billing. The reason that the format has changed is two-fold. The membership in the Stag is about 140, which computes to 14 members per month under the old format, with some months placing a large burden on monthly chairmen to complete all the work. The BIG reason for the change, however; is a legal problem. ALL the organizations in the club need to be under the umbrella of liability coverage the club purchases. The old format leaves loopholes in whether or not all the individuals involved were covered. We do not want to jeopardize anyone for helping make Lake Valley better.

*Dennis Schubert*  
Board President

### **Attention Junior Golfers:**

The Gateway PGA administers a Junior Golf summer program for boys and girls, ages 6-19. It's an excellent opportunity for future champions to make new friends, play new courses and gain valuable competitive experience. There are divisions for boys and girls in all ages and skill levels. If you are just getting interested in the game or want to take your game to the next level, the Gateway PGA has a division perfect for you. The Junior Program conducts over 100 tournaments each summer, at courses and clubs throughout the area. For more information, contact Gateway PGA Junior Director Carol Fromuth at 636-230-5833 or email her at [cfromuth@pgahq.com](mailto:cfromuth@pgahq.com).

**PLEASE HELP** take care of your golf course. You can help by using the sand bottles provided to fill divots, by repairing any ball marks that you find on the greens and avoiding any frosty areas on the course. It takes much longer for damaged turf to recover during the cold months of the year. All help is greatly appreciated. A few seconds of effort can save several days of turf healing time. Your efforts really do make a big difference. Thank you!



**CARTS in ROUGH ONLY until  
Spring 2005**

### **2005 GOLF DATES**



The golf calendar for the 2005 season is filling in quickly. If you have a group planning for next season, be sure to stop by and see Dan or Andi for details and to reserve your spot on the schedule for 2005.

### **LIMITS ON REDUCED GUEST FEES**

The Board of Directors would like to remind the membership to please limit to four the number of times their guests use the club facilities per calendar year. We encourage you to invite guests, but recommend that your guests be encouraged to join the Club after the initial trial period. Golf guests will only be entitled to the reduced guest rate for their first four visits to the course each calendar year. The following of these guidelines will help maintain our facilities and insure that the members have them to enjoy whenever it is convenient for them to do so. Thank you for your help in this matter

### **HAVE YOU CHECKED YOUR GRIPS LATELY?**

The colder weather affords an excellent opportunity to have your clubs checked and prepared for the upcoming golf season. Call Andi or Dan to have your equipment inspected or repaired. The Pro Shop offers a wide selection of new grips and services.

### **MEN'S INTER-CITY**

Lake Valley will be joining the Men's Inter-City golf program for 2005 and we are looking for individuals who will be interested in participating in this team event throughout the golf season. If you would like to play be sure to give Dan or Andi your name.

**From the Greenside:**

Hi to all from Greenside,

Wow—January is almost over! That means spring is on the way. We have had a few nice days this month but we still miss the regulars in the restaurant.



There are a few events in the making so mark your calendars.



Superbowl Sunday!!!! We are having a party.....starting at 5:00 PM, so bring your team spirit and join us. Of course the game will be on, the dart board will be going, and we will have a card or dice game in the back room for those that don't like football. There also has been a rumor of a possible poker game.

There will be chili and snacks provided, as well as drink specials.

The 50's party planned for April has been changed to the 23rd. By then all of our snow birds should be back and there will be plenty of time to find your poodle skirt in the attic.



We will be opening the restaurant for breakfast and lunch on February 14th. Chris and I are working on this year's menu so if you have a special sandwich you would like us to try please let me know.

Have a great month and be safe.

*Dianne and Staff*

**Address Changes & Phone # Changes:**

Dennis & Kathleen Spaulding—183 Country Club Drive, Camdenton

Ray & Susan Carey—33 Laker Lane, Camdenton

Bob & Jan Rippee—174 Arrowhead Dr., Camdenton

Bob & Mary Beth Callahan—919 Sunny Slope Circle, Camdenton

Larry & Glenda Stanley—162 Red Arrow Rd, Camdenton

Ben & Sharon Salls—344 West Lake Park, Camdenton

Ron & Jo Carpenter—104 Laker Lane, Camdenton

Enid Westoff—28 Haven Lane, Camdenton

**Additions:**

Dennis & Lee Radmer—77 Lighthouse Dr, Camdenton MO 65020 or  
639 Dougherty Oaks Ct., Manchester, MO 63021

**NOTE:**

If anyone has any address or phone number changes please call Priscilla.  
The new directories will go the printer around the 10th of February.

**A NOTE FROM ALEX:  
CARTS ON PATHS ONLY!!! WHY?**

I would like to give all “winter players” some information about playing conditions this time of the year. Playing golf on frozen ground is okay. Unfortunately, most golfers don’t play on days when the ground stays frozen all day. The potential for damage to the turf is highest when the ground is thawing. As the ground thaws, especially the first inch or so, the turf roots can easily be sheared off by cart traffic and even foot traffic. There is also the potential for severe compaction of the soil. This damage usually cannot be noticed until the turf comes out of winter dormancy and begins to grow. This is why we restrict golf carts to the cart paths during the winter when the ground is thawing.

In other news, we will be applying poa annua control to the fairways and zoysia tees this month (weather permitting). Also, we are still seeking donations for trees.

*Alex*

**ATTENTION MEN’S WEDNESDAY  
SENIOR SCRAMBLE PARTICIPANTS**

We are looking for new ideas and suggestions to improve this popular event and hopefully increase attendance this season. Please contact Dan or Andi with your thoughts. We are enclosing a survey on the subject in this newsletter and would like to receive everyone’s thoughts on the subject. Please complete the survey and return it to the Pro Shop at your convenience. This year’s Senior Scramble schedule begins on the first Wednesday in April.



**LADIES BUNCO**

Thursday—February 24th  
6:00 p.m.

**THE GOLF SEASON IS  
RAPIDLY APPROACHING**

We would like to remind all members that regularly play on Tuesday to gather your group information and reserve your starting times accordingly. We will again allow you to reserve your desired times for an entire month ahead. We do ask you to please inform the Pro Shop of any weekly modifications to your group so that proper adjustments can be made to the Tee Sheet. Tee times are a very valuable commodity to the financial success of your club and we cannot afford to lose revenue opportunities. Thank you for your help in the fight to maintain the lowest possible membership dues.

**REMINDER** - we have returned to rough only status with golf carts. Be sure to stop by the Pro Shop and sign a request for orange handicap flag if you will need one for the off season. The request must be presented to the Board of Directors for approval, so get your request in now. Requests must be re-approved each year.



Golf’s a hard game to figure. One day you’ll go out and slice it and shank it, hit into all the traps and miss every green. The next day you go out and for no reason at all you really stink.

## **RULES CORNER**

After last month's discussion concerning the *teeing ground* it seems a natural progression to discuss the other end of things, the *putting green*. So this month we will talk about Rule #16 in the "Rules of Golf". Rule 16 is very straightforward in its definitions of what we can and cannot do while on the green. The following are the highlights that we need to know:

### **16-1. General**

#### A. Touching Line of Putt

The *line of putt* must not be touched except:

- (1) the player may remove *loose impediments*, provided he does not press anything down;
- (2) the player may place the club in front of the ball when *addressing* it, provided he does not press anything down;
- (3) in measuring – Rule 18-6;
- (4) in lifting the ball – Rule 16-1b
- (5) in pressing down a ball-marker;
- (6) in repairing old *hole* plugs or ball marks on the *putting green* – Rule 16-1c; and
- (7) in removing movable *obstructions* – Rule 24-1.

#### B. Lifting and Cleaning Ball

A ball on the *putting green* may be lifted and, if desired, cleaned. The position of the ball must be marked before it is lifted and the ball must be replaced.

#### C. Repair of Hole Plugs, Ball Marks and Other Damage

The player may repair an old *hole* plug or damage to the *putting green* caused by im-

pact of a ball, whether or not the player's ball lies on the *putting green*. If a ball or ball-marker is accidentally *moved* in the process of the repair, the ball or ball-marker must be replaced. There is no penalty provided the movement of the ball is directly attributable to the specific act of repairing an old *hole* plug or damage to the *putting green* caused by the impact of a ball. Otherwise, **the player incurs a penalty stroke** under Rule 18-2a.

Any other damage to the *putting green* must not be repaired if it might assist the player in his subsequent play of the hole.

#### D. Testing Surface

During the play of a hole, a player must not test the surface of the *putting green* by rolling a ball or roughening or scraping the surface.

#### E. Standing Astride or on Line of Putt

The player must not make a *stroke* on the *putting green* from a stance astride, or with either foot touching, the *line of putt* or an extension of that line behind the ball.

#### F. Making Stroke While Another Ball in Motion

The player must not make a *stroke* while another ball is in motion after a *stroke* from the *putting green*, except that, if a player does so, there is no penalty if it was his turn to play.

### **16-2. Ball Overhanging Hole**

When any part of the ball overhangs the lip of the *hole*, the player is allowed enough time to reach the *hole* without unreasonable delay

and an additional ten seconds to determine whether the ball is at rest. If by then the ball has not fallen into the *hole*, it is deemed to be at rest. If the ball subsequently falls into the *hole*, the player is deemed to have *holed* out with his last stroke, and **he must add a penalty stroke to his score** for the hole; otherwise, there is no penalty under this Rule.

Here are a few other rulings from the “Decisions on the Rules of Golf” that may happen while playing your round:

### **Decision 16/5**

Q. A player’s ball struck the rim of the hole-liner, which had not been sunk deep enough, and bounced out of the hole. Should the ball be considered holed in such circumstances?

A. No. Under the Definition of “Holed,” the ball must be at rest within the circumference of the hole.

### **Decision 16/7**

Q. Is it permissible for a Committee to make two holes on each green....? If so, what is the status of hole B on each green when hole A is in use...?

A. Yes. The hole not in use on each green is a hole made by a greenskeeper...and Rule 25-1 is applicable.

### **Decision 16-1c/4**

Q. A player’s ball lies on or near the putting green. Before playing his next stroke, he taps down spike marks in the vicinity of the hole. Is this permissible?

A. No. Such action would be a breach of Rule 16-1c since the repair of spike marks in the vicinity of the hole might assist the player in his subsequent play of the hole.

### **Decision 16-1d/5**

Q. May a player clean his ball by rubbing it on the putting green?

A. Yes, provided the act is not for the purpose of testing the surface of the putting green. It is recommended that a ball be cleaned in other ways to eliminate any questions to the player’s intentions.

### **Decision 16-2/3**

Q. A player’s ball came to rest overhanging the edge of the hole. The player walked up to the hole and cast his shadow on the ball, believing that this would cause the grass to wilt and his ball to fall into the hole. Was the player in breach of Rule 1-2 (Exerting Influence on Ball) when he cast his shadow on the ball?

A. No.

This last example shows how desperate some golfers can become in order to save a stroke on their scorecard. I’m sure we have all seen many examples of this kind of hopefulness. Be sure to checkout all the decisions on Rule 16. We all deserve a good laugh now and again. Until next month, good golfing and stay warm!

*Dan Robertson*

Have you ever noticed what golf spells backwards? ~Al Boliska

## 2005 Golf Schedule:

April 6 – Men’s Senior Scramble Begins  
April 7 – Ladies League Play Begins  
April 16 – M.G.A. Rules of Golf Seminar  
April 24 – Men’s Kick-Off Event  
May 2 – Men’s League Begins  
May 5 – Ladies kick-Off Event  
May 13-15 – LVCC Men’s Fourball Invitational  
May 30 – Lake Valley Scholarship Tournament  
June 9 – Ladies Area Guest Day  
June 10-12 – LVCC His & Hers Scramble Invitational  
June 25-26 – “The Draft” Tournament  
July 4 – LVCC Fourth of July Celebration and Members Scramble  
July 8-10 – LVCC Ladies Scramble Invitational  
July 22-24 – Men’s Member-Guest Tournament  
August 11 – Ladies Member-Guest Tournament  
August 12-14 – LVCC Two-Man Scramble Invitational  
August 22 & 24 – Men’s Senior Club Championship  
August 27-28 – Men’s Club Championship  
September 14-15 – Ladies Club Championship  
September 25 – LVCC Couples Championship  
October 2 – M.G.A. Fall Blow-Out Event  
October 6 – Ladies Season Finale  
October 14-16 – LVCC Fall Couples Scramble Invitational

"I'd like to see the fairways more narrow. Then everybody would have to play from the rough, not just me." -Seve Ballesteros

"The reason the golf pro tells you to keep your head down is so you can't see him laughing."  
-Phyllis Diller

"As you walk down the fairway of life you must smell the roses, for you only get to play one round."  
-Ben Hogan