



Highlights of this issue:

- From the Board of Directors
- Rules Clinic April 16th
- Men's Monday night league
- Tree trimming

Volume 2, Issue 3

March 2005

From the Board of Directors:

We would like to welcome our new members to Lake Valley; Jack & Peggy Robinson, and Cole Glascock.

The restaurant opened back up on the 14th of February for breakfast and lunch. We hope everyone will come out and help support it this season. Sunday brunch will resume on Easter Sunday.

The board is bringing in a caterer (Weeds & Company) to do the special events this year, such as wedding receptions, etc. We feel this will be to Lake Valley's advantage.

The new computer system is up and running. There are still a few bugs to get fixed, but we are hoping it will be much better than the one we have now.

The new scoreboard will be put up before Spring.

Hope to see you on the course very soon!

Dennis Schubert
Board President

Board of Directors:

President—Dennis Schubert
Vice President—Chris Day
Secretary—Chris McElyea
Treasurer—Jim Krupa
Jim Besancenez
Mac Green
Carl Hubbell
Janice Ohmes
Tim Scott

**CARTS in ROUGH ONLY
until Spring 2005**

Notice Regarding Member Dues Payment Options

Beginning with the April 1, 2005 Dues billing any member wishing to pay for their dues using a credit card will be charged a 2% service fee. The service fee only applies to credit card payments, all other forms of payment will continue to be accepted as before. This policy change has been deemed necessary due to the rising costs associated with accepting credit card payments. We are sorry for any inconvenience that this may cause the membership and thank you for your understanding

It's good sportsmanship not to pick up lost balls while they are still rolling. ~Mark Twain

UPCOMING SCHEDULE

MARCH 26 SUTTON INVITATIONAL (A.M.)
 MARCH 28 COURSE CLOSED FOR AERIFYING AND TOP DRESSING
 APRIL 6 MEN'S SENIOR SCRAMBLE OPENING DAY
 APRIL 7 LADIES ASSOCIATION OPENING DAY
 APRIL 11 LADIES SENIOR SCRAMBLE OPENING DAY
 APRIL 13 WAL-MART BENEFIT TOURNAMENT (A.M.)
 APRIL 16 U.S.G.A. RULES OF GOLF SEMINAR (2:00)
 APRIL 18 ???? GREENS TOP DRESSING (COURSE CLOSED A.M.)
 APRIL 20 MIKE CIVILI GROUP (A.M.)
 APRIL 22 GOEBEL GROUP (A.M.)
 APRIL 23 GOEBEL AND COCHRAN GOLF GROUPS
 APRIL 24 MGA KICK-OFF BREAKFAST & GOLF (COURSE CLOSED A.M.)
 APRIL 25 ???? GREENS TOP DRESSING (COURSE CLOSED A.M.)
 APRIL 29 SOUTHERN MISSOURI CONTAINER GOLF GROUP (P.M.)
 APRIL 30 SOUTHERN MISSOURI CONTAINER GOLF GROUP (A.M.)
 MAY 1 SOUTHERN MISSOURI CONTAINER GOLF GROUP (A.M.)

RULES OF GOLF SEMINAR

The Men's Golf Association is again sponsoring a "Rules of Golf" seminar on Saturday April 16th. This will be a rules seminar in brief that will focus on those everyday occurrences at Lake Valley. The information will be delivered with a little levity and features some of our locals. The event is open to any Lake Valley members and yes, ladies are welcome to attend. We had a great turnout last year and we hope for an even bigger group this year. Stay tuned for more information.

DISCOUNTS ON GOLF CARTS?



Yes, golf cart packages are available to all members. Packages can be purchased in \$100 increments and they offer you a \$2 per use discount on your riding carts. The cart package balances also carry over from year to year and may be refunded should you leave the club. You have nothing to lose and money to gain so sign-up today. Just call or drop by the Pro Shop to get set-up for the coming season.



LADIES BUNCO

Ladies Bunco will be Thursday, March 24 at 6:00 p.m. Please come out and join us. We have a great time. Sign up in the Restaurant or call Priscilla at 346-7218

HAVE YOU CHECKED YOUR GRIPS LATELY?

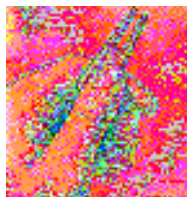
The colder weather affords an excellent opportunity to have your clubs checked and prepared for the upcoming golf season. Call Andi or Dan to have your equipment inspected or repaired. The Pro Shop offers a wide selection of new grips and services.

TIRED OF HAULING YOUR EQUIPMENT AROUND IN YOUR CAR?

Then sign up for a locker or bag storage slot at the club. We currently have a few spaces available for the coming season. Bag storage slots are offered for only \$45 and lockers for \$20 per year. Call ahead and your clubs will be loaded on a cart and ready to go when you get here. No more lifting and carrying and they won't be in your way when you need extra trunk space in your vehicle.

PLEASE HELP take care of your golf course. You can help by using the sand bottles provided to fill divots, by repairing any ball marks that you find on the greens and avoiding any frosty areas on the course. It takes much longer for damaged turf to recover during the cold months of the year. All help is greatly appreciated.

A few seconds of effort can save several days of turf healing time. Your efforts really do make a big difference. Thank you!



MONDAY HAND & FOOT

Our **MONDAY** "Hand & Foot" card group would like to invite you, your friends and neighbors to come and play cards with us.

We meet for lunch at 11:30 and start playing promptly at 12:30. We finish around 4:00 or 4:30.

Come join us for a fun afternoon and bring a friend! If you have never played "Hand & Foot" don't worry—it's easy to learn.

For more info, contact Carol Stone at 346-5941. Carol Stone.

MEN'S MONDAY GOLF LEAGUE -

May 2nd will be the start of the regular schedule for the 2005 Men's League. Team registrations are currently being accepted. This is a two-man team event, which uses handicap. This year teams will again be divided into two divisions, one will play the ball up and the other will play the ball down. Be sure to state your preference when you sign up. You and your partner may sign-up by calling the Pro Shop or by adding your names to the list in the Pro Shop. There is a limited number of spots available, so sign-up early. The deadline for signing up will be the April 24th Kick-Off event. All league players **MUST** be members of the Men's Golf Association and have current handicaps in the GHIN system. Be sure to record all your scores this spring to make sure a current handicap is on file. The league season will last fourteen weeks and conclude with a playoff night. Once again, substitutes will be allowed if you cannot make a particular night of play, but the substitute must also be a member of the Men's Golf Association and have a current handicap.



PRO SHOP MERCHANDISE

Be sure to drop by your Pro Shop and see all the latest in golf fashion and equipment. New merchandise is arriving on a regular basis. Please remember that members receive discounts on all purchases from the Pro Shop. There are always specials to take advantage of too. Don't let things get picked over before you act, shop while a full selection exists.

From the Greenside:

Hi to all from Greenside, Spring is almost here!!!! The restaurant is now open for lunch. Hours are Mon. thru Sat. 10A – 2 PM.



Starting in April we will be serving 7AM – 3PM. Easter will start Sunday Brunch for the season. Don't forget to make your reservation for Easter.

Bunco is back..... We will have Bunco on the fourth Thursday of every month at 6:00. This is a very fun and easy game to play. What a great way to meet people and fun at the same time.

Don't forget the 50's party in April..... Have you found your poodle skirt yet? There will be a sign up in the restaurant. Be sure to get your name in early.

Dianne and Staff

LADIES GOLF ASSOCIATION:

Golf season for the ladies association is getting closer. We have had lady golfers out in this wonderful spring like weather. Keep it up and say "hello" if you see other ladies out there in the elements; wet feet, embedded balls, etc. Ladies, look for notices for special days on Thursday (in season) to welcome you to play a round of golf with our association. Also, be ready to sign up at the Pro Shop for Monday's 9 hole scramble open to ALL lady golfers of any age.

See you soon.

Mary Anne Schleicher, President

**MEN'S GOLF ASSOCIATION:**

Your MGA board is hard at work on this year's events which we hope you will enjoy. The Men's Kick-Off is scheduled for Sunday, April 24th. In response to feedback from members, it has been decided that all players whose age plus handicap is greater than or equal to 90 will play from the gold tees. The remainder will play from the white tees.

This year when you join MGA you will receive a baseball style cap with the Lake Valley logo and MGA on it. These hats will be available at the Kick-Off event.



The governing body for the GHIN handicap system has raised their computer fee by \$3.00 per person, which means the MGA has less money to work with compared to last year.

There will be a rules clinic again this year, on April 16th at 2:00 p.m. This will be organized and presented by Dan Robertson, Dennis Jones, and Doug McDaniel, who together work hard to provide information to help us understand the rules and how they can assist us.

Steve Butterfield, President

**CARTS in ROUGH ONLY until
Spring 2005**

Golf! You hit down to make the ball go up. You swing left and the ball goes right. The lowest score wins. And on top of that, the winner buys the drinks.

A NOTE FROM ALEX:

At the February '05 greens committee meeting we evaluated many of the trees around the course. Some trees need trimming for safety reasons (dead limbs, etc.) while others are beginning to adversely affect play. For instance, the 2 sycamore trees that most of you have come to know when you're teeing off of #3 have gradually narrowed the opening to the fairway. These need some trimming. So, in the next few weeks, we will be trimming some trees around the course in an effort to speed up play, reduce the chance of a ball being deflected back toward players, and improved turf growing conditions by allowing more sunlight.



In other news, the cart path on #13 is nearly completed and the new tee box on #4 is coming along as scheduled.

Alex

IT'S TIME TO TUNE-UP YOUR GAME

– Shake off the Winter rust with a refresher lesson or series of lessons to make sure your game is in tip top shape when Spring finally arrives. Contact Andi today to reserve a time to get into the groove. Private and group lessons are available in single lessons or a series. Call the Pro Shop at 346-7218.

**ATTENTION SENIOR GOLFERS! -**

The start to the weekly Men's and Ladies Senior Scramble event schedule is rapidly approaching. We will begin play in early April. Look for the sign-up sheets at the end of March. Be sure to get your name on the list to play. This is a great chance for new members to meet other members and enjoy a pressure free golf experience. The surveys are being tallied and we should have the results to announce soon. Early results show that no drastic changes are necessary

RANGE PASSES

Be sure to sign up for your 2005 Driving Range Pass. Individuals may purchase the plan for \$100 and families for only \$175. The range pass is good for the entire calendar year of 2005 and offers unlimited range balls for your practice needs. Just call or stop by the Golf Shop to get a plan in place.

REMINDER - we have returned to rough only status with golf carts. Be sure to stop by the Pro Shop and sign a request for orange handicap flag if you will need one for the off season. The request must be presented to the Board of Directors for approval, so get your request in now. Requests must be re-approved each year.



"Always throw your clubs ahead of you. That way you don't have to waste energy going back to pick them up."
~Tommy Bolt

A "gimme" can best be defined as an agreement between two golfers, neither of whom can putt very well. ~Author Unknown

RULES CORNER

This month's topic isn't a rule but rather a miscellaneous decision by the U.S.G.A.; however, it is a question that gets asked many times each year. One of the most debated topics throughout golf history is whether a rake should be placed inside or outside of the bunker after a player has finished using it. Believe it or not the U.S.G.A., in their usual thorough way, has come up with an answer for us which hopefully will put the issue to bed for all eternity. They have decided that "there is less likelihood of an advantage or disadvantage to a player if rakes are placed outside of bunkers.

Ok, I know we have all seen the case of a ball deflected into or stopped from entering a bunker from a rake left in a poor location outside a bunker. I'm sure you have also seen the ball in a bunker resting against a rake left inside the bunker. Often times when this occurs the ball has been stopped on a severe slope and therefore leaves the player a much more difficult shot than if the ball had rolled into the flat of the bunker. Rule 24-1 requires the player to replace his ball on the same spot or find a spot in the bunker not nearer the hole if interference occurs with a *movable obstruction*, such as a rake. If the rake was left on a slope on the back end of the bunker

this may not be possible and thus cause the player a possible penalty situation under the Rule 20-3d/2. Because of this inequity you might determine that the place for a rake would be the middle of the bunker instead of the edge. Consider the extra raking a player would then have and the possible footprints that he would leave that could effect a mis-played stroke. I would also ask you to consider the extra time that would be spent raking which will adversely effect pace of play. It takes way too long to play a round as it is.

There is no perfect answer to this situation but the U.S.G.A. sums it up by stating, "... after considering all these aspects, it is recommended that rakes should be left outside bunkers in areas where they are least likely to affect the movement of the ball".

Well, there you have it. We can all rest better tonight knowing that rakes will be left outside the bunkers and in a spot that is less likely to influence a ball. Ha Ha! The U.S.G.A. obviously hasn't seen some of the places where my ball comes to rest. But at least we now have a guideline to use and we can all blame our future bad fortune on the U.S.G.A. Until next month, Good Golfing!

Dan Robertson

ADDRESS CHANGES & ADDITIONS:

Betty Dailey—168 Dailey Circle, Camdenton, MO 65020

Harold Cisna—198 Cedar Glen Dr. Unit 2-D, Camdenton, MO 65020

Jimmy & Roberta Williams—259 Liahona Circle, Sunrise Beach, MO 65079

Bud Donaldson & Sara Reiter—93 Cedar Glen Court, Unit 1-D, Camdenton, MO 65020

Additions:

Cole Glascock—PO Box 224, Osage Beach, MO 65065 (348-2281)

Jack & Peggy Robinson—209 Osage Trails Dr., Climax Springs, MO 65324 (573-345-3617)